

## Visible Haematuria

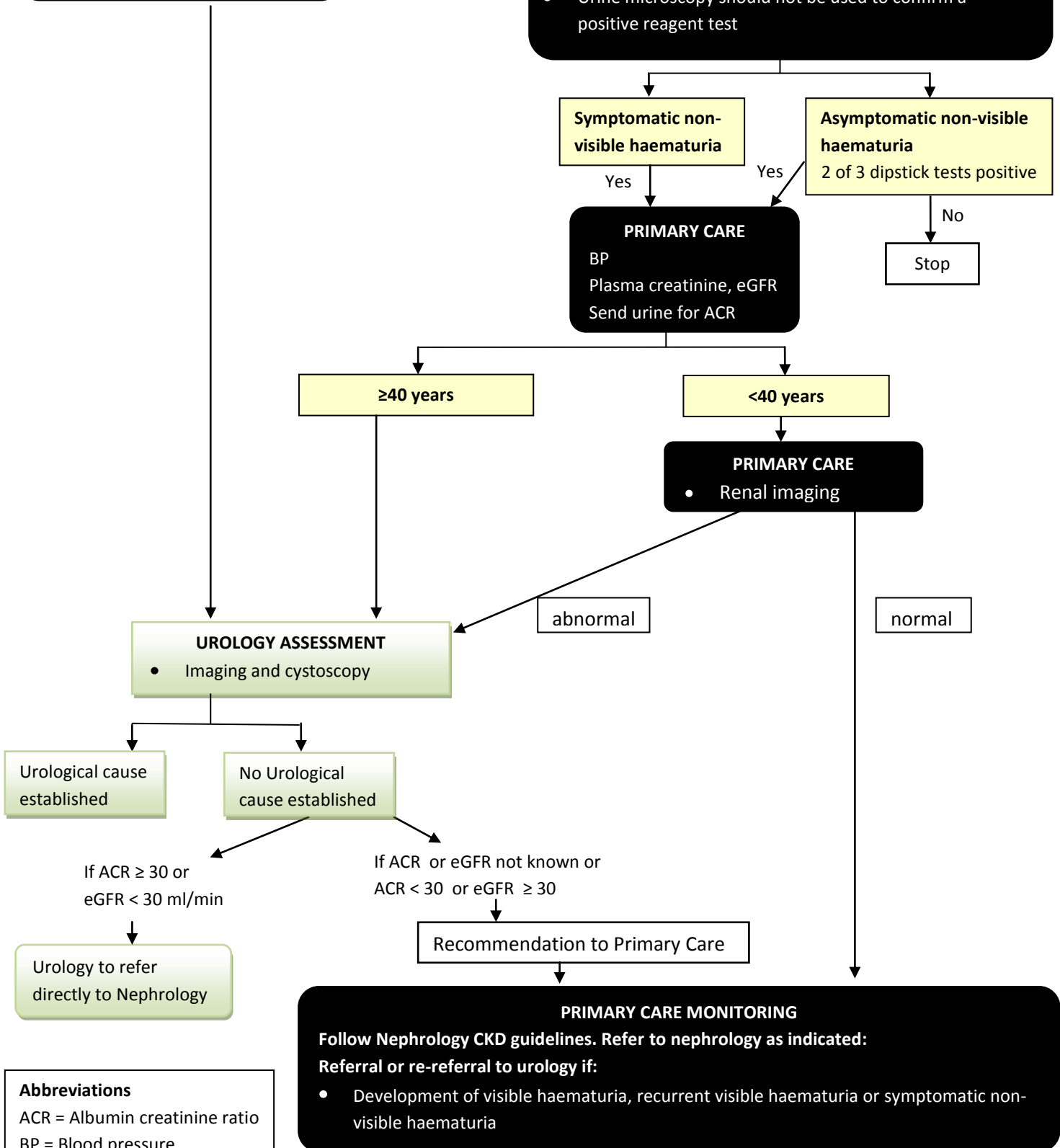
### PRIMARY CARE

Plasma creatinine, eGFR  
Exclude transient causes including urinary tract infection

## Non-visible Haematuria

### PRIMARY CARE

- Exclude transient causes including urinary tract infection
- Use dipsticks for the investigation of haematuria
- $\geq 1+$  blood requires further investigation
- Urine microscopy should not be used to confirm a positive reagent test



### Abbreviations

ACR = Albumin creatinine ratio  
BP = Blood pressure  
eGFR = Estimated glomerular filtration rate