

A Major New CKD Project Commencing Soon (Appendix A)

QUALITY IMPROVEMENT IN CHRONIC KIDNEY DISEASE (CKD): A SIGNIFICANT CHALLENGE FOR PRIMARY CARE

Background: Chronic kidney disease (CKD) is an important condition affecting around 10% of the population and is an important cause of cardiovascular complications. Indeed, patients are more likely to die prematurely from cardiovascular disease than to progress to renal failure requiring dialysis or transplantation. In addition, CKD is a well-known complication of diabetes and with the increasing prevalence of this disease, diabetes is now the single commonest cause of renal failure in the Western World.

Research Projects: Kidney Research UK, in collaboration with University Hospital Leicester and St George's Hospital Trust, have developed a unique, £1.2 million partnership with support from the Health Foundation and Edith Murphy Foundation. Two complementary, three-year research studies, commencing in Spring 2007, have been developed to test and implement a range of quality improvements (QIs) for individuals with chronic kidney disease (CKD) with one project specifically focussing on those patients also having diabetes.

Involvement of Primary Care: The National Service Framework for Renal Services (Part Two: Chronic kidney disease, acute renal failure and end of life care) highlights the importance of Primary Care in the early identification and management of CKD to minimise consequences and delay its progression. There is good evidence to suggest that the management of this chronic condition can be lead from the primary care setting but that there is a need to improve both information and training available, with the ultimate aim of improving the quality of care provided and outcomes for the patient.

Overall outcomes: The projects will deliver the evidence base for better primary care led interventions, enhanced quality of care and drive forward new advances in the treatment of chronic kidney disease within the community. This will be achieved through:

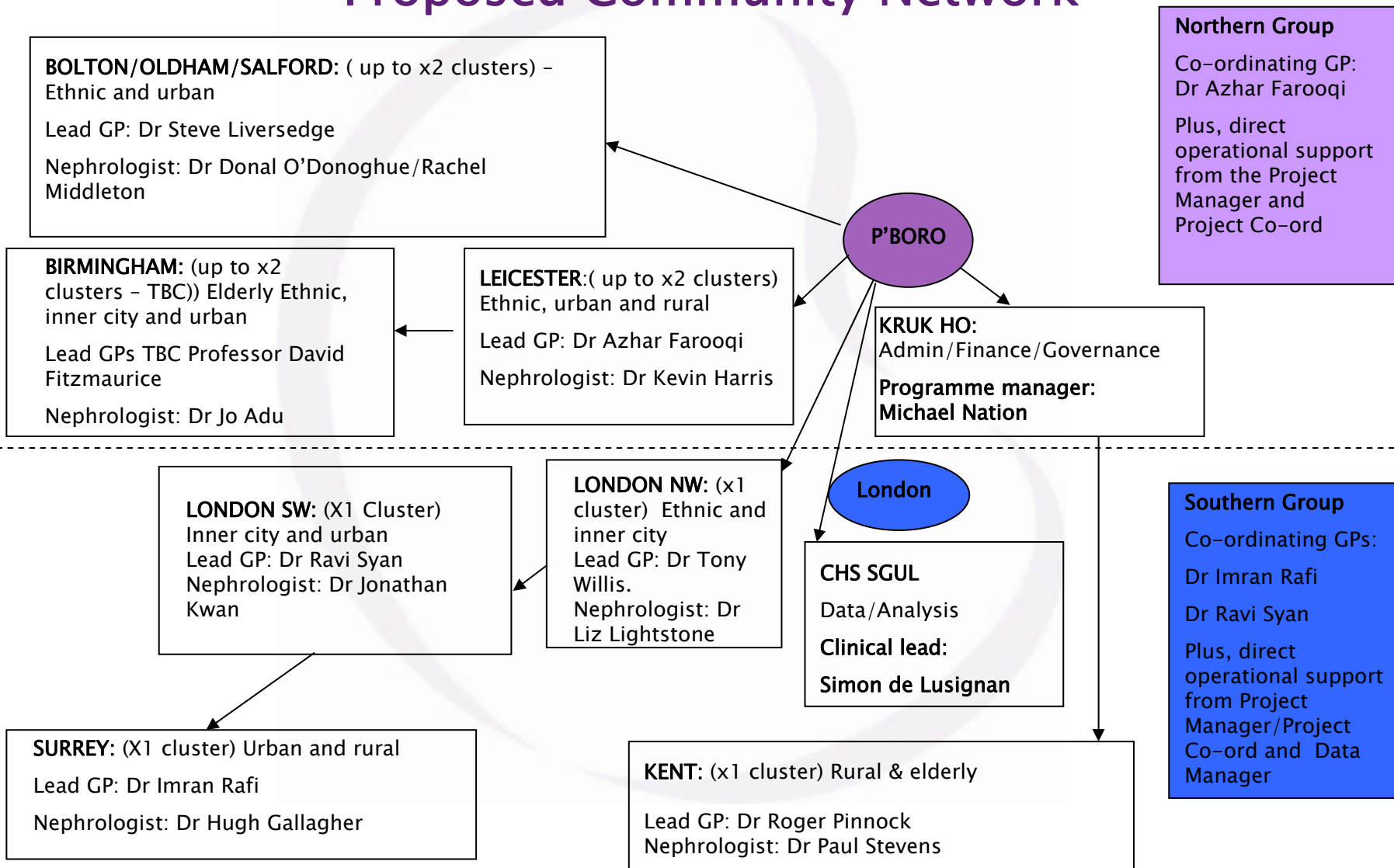
- Improved control of blood pressure
- Reduced referral but better liaison with secondary care
- A reduction in rate of decline in renal function
- Patient empowerment
- Improved GP confidence in managing CKD
- More efficient recall and implementation of care plans for all adults with CKD due to diabetes
- The development of best practice that facilitates timely and appropriate referral for specialist interventions and where necessary care and improved preparation for renal replacement therapy (RRT) for those patients developing end stage renal failure

Location: Kidney Research UK, as the leading national renal research charity, has established a unique CKD partnership with leading researchers, medical professionals and key associations to develop, monitor and assess these key community-based research initiatives. Eight localities in England including Salford/Oldham/Bolton, Birmingham, Leicester, North London, South London, Surrey and Kent, each involving 10 GP practices, have been selected to undertake this research.

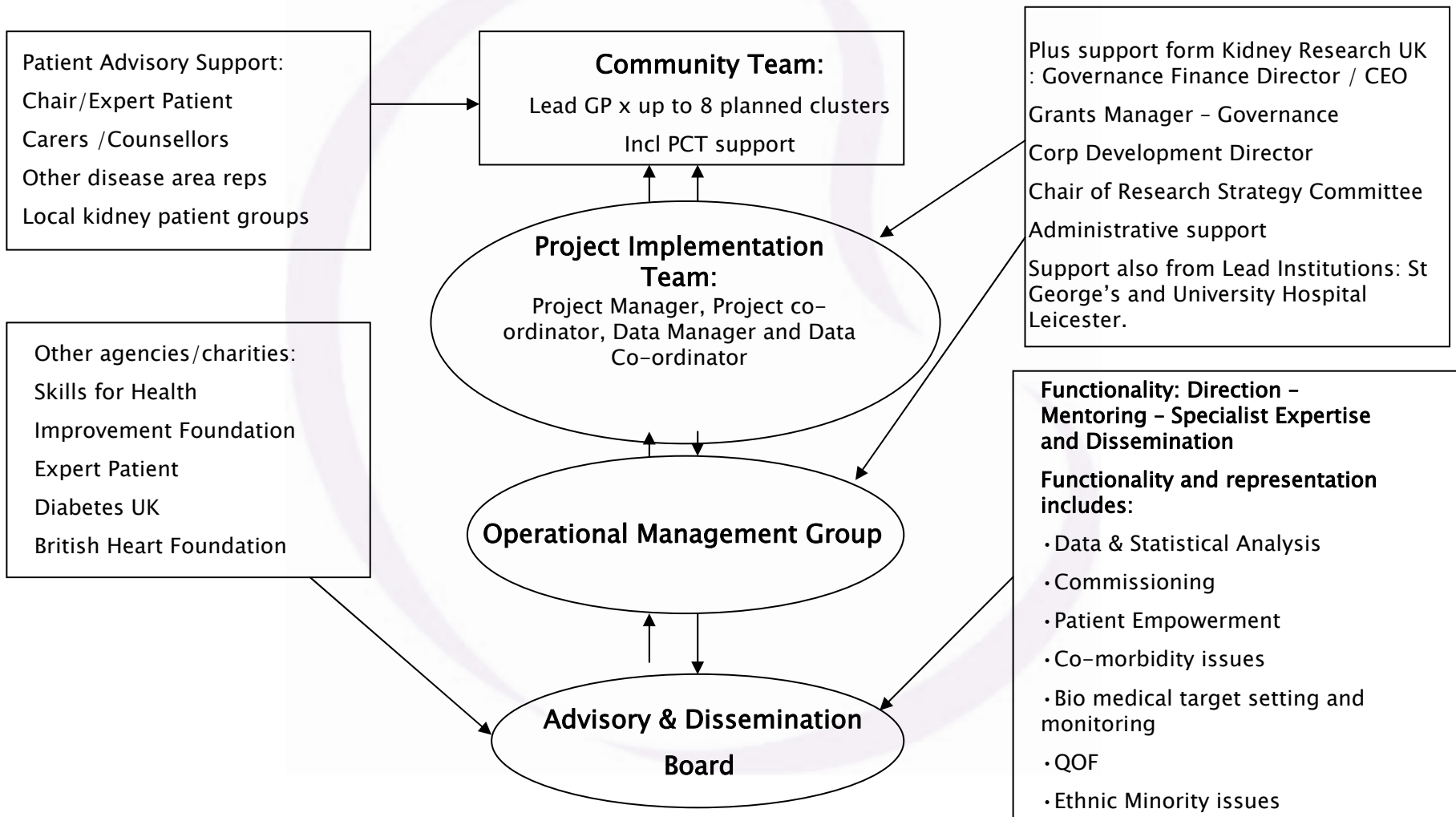
Further information available from:
Elaine Davies, Grants Manager, Kidney Research UK
Tel: 01733 704658 Email: elainedavies@kidneyresearchuk.org
www.kidneyresearchuk.org

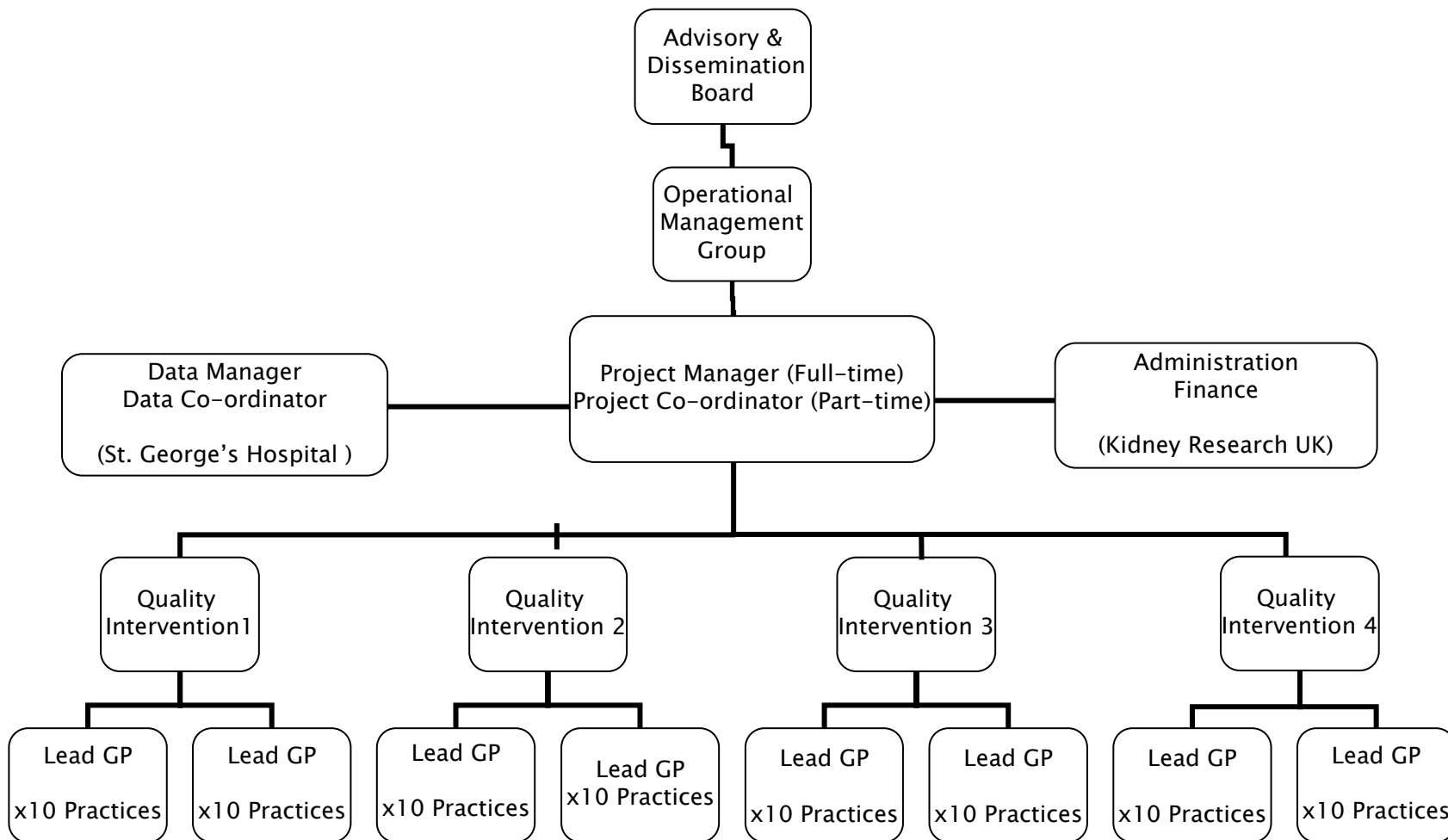
Registered Charity 252892

Proposed Community Network



Project Management Structure





*At each cluster site:

- support from designated nephrologist
- liaison with local PCT Commissioning Services
- liaison with patients and other stakeholders; covering other co-morbidity issues etc